



KONICA MINOLTA

# bizhub PRO 951

✍ Entry-level production, high-level dependability



**bizhub PRO 951** 

**B/W PRODUCTION PRINTING SYSTEM**

Giving Shape to Ideas



# DIGITAL PRINTING IS THE WAY TO EFFICIENT GROWTH

The bizhub PRO 951 is the ideal black & white system for you to grow in digital print production. It combines robust printing capabilities, outstanding quality, a wide range of finishing alternatives and sophisticated connectivity. The bizhub PRO 951 comes with various features and benefits that enable your economic growth from digital printing.

- **Meeting tightest deadlines**, printing within hours rather than days, are your key requirements for digital print production. You must be able to rely on a system that supports these high productivity demands.
- **You need to offer highest quality for the complete printed product.** Consistency and reliability of your output must be first class at all times. And tools to easily control and maintain the output quality are of top importance for you.
- **You need to expand your service offerings** and find new ways to attract and keep your customers. At the same time, cost savings and the economic provision of print products are essential for you to remain competitive.
- **The integration of a system, which fulfils all of these demands**, into your existing environment must require little effort, while the highest possible degree of automation should facilitate and streamline your print workflows.

**If these are your requirements, don't hesitate to take a closer look at the bizhub PRO 951. You will most likely find that it can do more for you than you ever thought possible!**

# HIGH QUALITY PRINTING WITH EXTRA VERSATILITY

## Reliable productivity

You achieve more print jobs in the shop and meet tightest schedules with ease, helping you grow your business and letting you relax about the future: The key for your success is the bizhub PRO 951. As your robust production stepping stone to steady profitability, it delivers the kind of dependability in productivity, which gives you and your customers ease of mind. With output rated at 95 A4 pages per minute (ppm), and an impressive A3 speed of 55 ppm, this unit delivers maximised performance combined with long-term production security for entry-level digital printing, also thanks to tools like CS Remote Care.

## Outstanding print quality

Stand out from the competition in the market place and take advantage of new business opportunities with existing customers thanks to amazing quality! Konica Minolta's in-depth technologies provide this even at the entry-level to black and white production printing. Simitri® HD polymerised toner for example guarantees high precision output of text and lines, produced using a 1,200 x 1,200 dpi LED print head for reproductive consistency. The Tone Curve Utility tool provides operators with complete control and flexible optimisation of each and every print job. It is these great features, which work with you and for you to deliver the best print output results and form the basis for long-term customer satisfaction.

## Flexible finishing

Creating new print applications, providing new service opportunities, plus extreme cost savings for greater profits from higher margins – these are the key aspects you benefit from with the bizhub PRO 951. An extensive variety of inline finishing options, including stapling and automatic ring binding, complements the print quality, which is further enhanced by remarkable media flexibility (such as 300 gsm in duplex printing and optional 350 gsm from the PFU trays). All options are available in a modular concept that allows your system to be individually tailored to match your specifications. The bizhub PRO 951 resets the benchmark for flexibility.

## Versatile operation

The bizhub PRO 951 gives you high levels of comfort and convenience, maximising ease of use and helping you to reduce not only labour but also hidden costs with intelligent choices in the implementation of software solutions. A range of interfaces for example provides full integration into existing data networks to generate data for detailed cost centre accounting; or integration into a workflow solution for efficient queue management. This unit is equipped with all the competences needed to adapt and respond perfectly to today's demands.





## bizhub PRO 951 TECHNOLOGY

The bizhub PRO 951 delivers success in print thanks to a wide choice of unique proprietary technologies which together ensure high definition images as the basis for top quality printouts. The image quality is truly consistent from the very first to the very last page, and from print job to print job. It is the ultimate guarantee of professional results able to persuade even the most demanding customers.

### 1,200 x 1,200 dpi LED print head

The bizhub PRO 951 achieves two-way 1,200 dpi print resolution thanks to the implementation of a state-of-the-art LED print head (LPH). This technology improves the reproducibility of even small fonts, while the high number of screen raster lines effectively smoothes the reproduction of half tones.

### Simitri® HD toner

Simitri® HD toner is a Konica Minolta in-house development, which uses polymerised processing techniques to produce smaller, more consistently shaped particles to raise printing resolution. This polymerised toner also has a lower fixing temperature and helps reduce paper curl. And because fixing is oil-free, the result is a natural looking gloss with reduced glare producing an output of quality that rivals even that of offset printers. The toner material recipe contains around 10% biomass helping to reduce the environmental impact.



### Belt transfer system

The bizhub PRO 951 is equipped with a state-of-the-art belt transfer system designed from scratch to improve paper feeding as well as the quality of the transferred images. The full-area adherence of the paper to the belt eliminates any gaps and ensures that the toner is applied to the paper consistently and absolutely evenly.

### User-defined screens for setting and Tone Curve Utility

The introduction of pre-defined setting masks (two types with three patterns each) plus a choice of dot screen settings allow users to select the best screen for each specific print job. The print station also comes with a standard controller plus the proprietary Tone Curve Utility tool to help adjust and correct print data to better match customer specifications. These techniques allow for adjustment of image brightness and contrast over a wide range without affecting text to still deliver 100% density. The system allows individual customer settings to be stored and recalled as and when needed.

For jobs that involve the reproduction of colour documents in black and white, the CIE colour space allows the operator to achieve highly accurate colour conversion by precise grey scale calibration and controlled collapse of shadowed areas.

### Schedule management

The schedule management application implemented in the bizhub PRO 951 gives operators an overview of information needed to best handle all queued print jobs. The display includes all current jobs plus helpful detailed information including kind of paper in use and displays a timeline to indicate capacities. The operator can access updated and detailed overviews of suspended and reserved jobs.



# bizhub PRO 951

## BUSINESS OPPORTUNITIES

The production print market is undergoing significant changes today. Accelerated by the recent economic downturn, the number of printing businesses is in decline, total print volume is decreasing and an increasing number of print applications are being transferred to electronic media.

Informed printing companies know that they need to grow their print business, increase profit margins and generate new revenues. To support customers in achieving this, Konica Minolta has launched Digital1234; a comprehensive business development program that puts the focus upon the customer's needs to enable his business.

The key question is 'How can we enable your business today?' The solution to most business challenges can simply be answered with "by saving you money, increasing your profit, adding new services and making you more productive." The Digital1234 business building program has been designed for simplicity and encourages businesses to take an opportunity-based approach – to start driving a better business. Using four practical steps the customer is guided and coached on how to identify, assess, justify and implement new business opportunities.

The basic concept features these four steps, giving advice through the business process: Why should I invest in this opportunity? How can I fit this into my existing business? Who has experienced it and can tell me about it? What steps should I take to be successful with this new opportunity?

Starting with "why", Digital1234 uses simple opportunity-based papers written by credible industry partners, who explore each business opportunity. The second step focuses upon the "how", by using simple assessment questions set by a panel of international and independent business experts. The third step, the "who", describes the story behind the business success while the fourth step provides business resources for download to help customers prosper in their business, such as business focused implementation guides written by industry consultants.

1234

**DIGITAL1234**  
enabling your business

### Digital1234

The Digital1234 business development program is designed to encourage print businesses to focus on the opportunities to save money, increase profits, add new services and to improve productivity.

Using four practical steps the customer is guided and coached on how to identify, assess, justify and implement new business opportunities.

## Web to print

- In the past all print jobs were submitted and processed manually.
- With the rise of Internet usage, most printer businesses have recognised the value to offer customers a web portal where they can submit their print jobs.
- Web submission includes: uploading the print data, getting a price quote, getting a proof, tracking information on the status of the print job, automatic link to payment and administration, etc.
- Web to print enables your company to be online 24/7, to automate the print job submission process, improve efficiency, eliminate manual elements in the job submission process.

## Variable data printing

- What is most unique about digital printing?
  - You can customise every page within one print run and thus create a unique, targeted and relevant message for each recipient.
  - This is called “Variable Data Printing” (or VDP).
- Direct Mail can be more personal:
  - “Dear Sir or Madam” will become “Dear Paul”.
- This is the unique value proposition with digital printing that cannot be achieved with traditional printing.
- Studies have shown: the more you zoom in on your readers the more effective your message will be.
- On average personalised marketing collateral leads to 31% greater profits compared to general marketing materials.
- As a print provider you can charge more for VDP jobs, and your customer gets a better response per piece.
- More profit for you – more business for your customer.



# bizhub PRO 951

## ENTRY-LEVEL UNIT WITH TOP-LEVEL PRODUCTIVITY

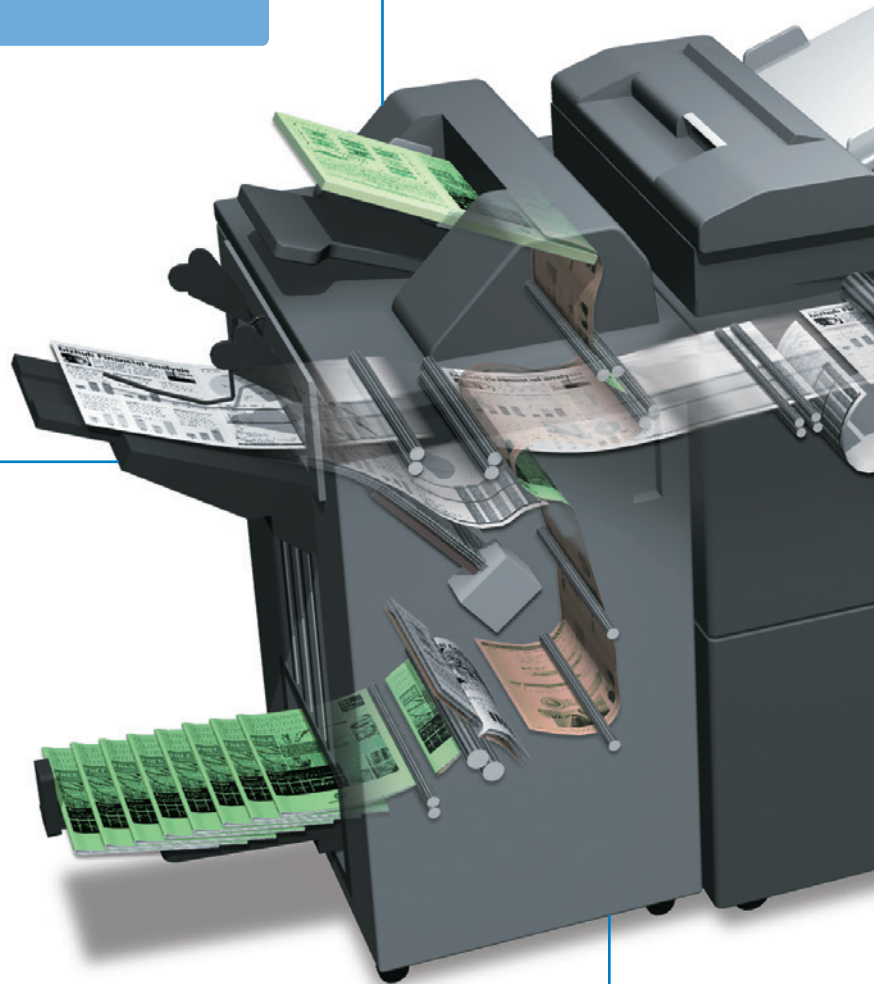


### POST INSERTION

- Optional post insertion with two trays and up to 400 sheets input capacity

### PAPER OUTPUT CAPACITY

- Up to 4,200 sheets
- Separate sub tray
- Separate tray for booklets



### VARIOUS FINISHING ALTERNATIVES

- Optional booklet finisher for booklets of up to 20 sheets (80 pages); staple finisher with staple-cutting mechanism and stapling of up to 100 sheets; Z-fold/punching finisher, multi (GBC) punch finisher, auto-ring binder





**TOUCH PANEL**

- Very easy to use, full-colour touch screen, movable

**POWERFUL CONTROLLER**

- High speed RIP integrated for exceptional productivity

**CHOICE OF PAPER UNITS**

- LU-409: A4 large capacity cassette
- LU-410: SRA3 large capacity cassette
- PF-706: 3 tray paper feed unit

**BLACK & WHITE PRINTER**

- Up to 95 ppm A4 / 55 ppm A3
- Peak volume of 1.5 million prints
- 1,200 x 1,200 dpi print resolutions
- Duplex up to 300 gsm

**TECHNOLOGY**

- Simitri® HD Toner
- Enhanced Dmax settings
- Green technologies for high ecoconsciousness



The bizhub PRO 951 stands out because of its truly outstanding RIP and print performance, delivering the kind of capabilities which help commercial printers and print providers keep up with continuous production demands and satisfy customer specifications. The controller is fitted out with the very latest Intel platform and integrated into the main body.

#### Optimised job processing

Featuring the kind of RIP speed previously unavailable in this class, the bizhub PRO 951 easily handles even the most comprehensive of jobs, and features JDF-JMF compliance to ensure full and easy integration into any working environment. This is optimised job processing at its very best, boasting the kind of capacities needed to produce high volumes in a minimum of time. Featuring outstanding CIE functionality, the controller enhances the reproduction of colour-based documents wherever necessary. RGB colour data are transposed into the CIE colour space to produce much finer grey scaling with high degrees of differentiation, far exceeding what is achievable when printing colour data without transformation.

## bizhub PRO 951 CONTROLLER

## Tone Curve Utility

Konica Minolta's unique Tone Curve Utility places a tool at your fingertips to help make intelligent RIP adjustments, such as screening and tone curves, along with the ability to customise the screening angle and dot shape. Operators have the choice of a variety of pre-defined tone curves and can quickly and simply create individual curves

using straightforward drag&drop functionality, e.g. setting customised profiles such as the controller default or storing them on the RIP ready for instant recall in the printer driver. It is this level of comprehensive functionality which means operators have complete and flexible control over print quality optimisation.

The image shows the Tone Curve Utility software interface on the left, featuring a graph with an S-curve and various adjustment sliders. Two printed test charts are shown to the right. The first chart, labeled "Printed using default tone curve", shows a test image with a dark area. The second chart, labeled "Printed using new tone curve", shows the same test image but with a lighter dark area. A callout box points to the text on the second chart, stating: "Reducing the maximum density does not affect the text which remains at 100% density." The text in the callout box is: "This is 100% black text" and "This is 75% black text".

## Paper catalogue

The paper catalogue is another feature of the bizhub PRO 951 that complements the device's other outstanding capabilities to maximise operational speed and efficiency. After programming the paper catalogue just once, the operator no longer needs to think about whether the paper type required for a specific job is stored. When preparing production, the operator simply selects the desired type of media from the paper catalogue. The functionality includes the option of allocating individual names to different types of paper, like "Corporate Blue". This is a way of speeding up recognition and raises the benchmark of user convenience even higher.



# IMPRESSIVE VERSATILITY FROM A TO Z

There is no such thing as a simple production run – every production job has the expectation of professional handling of the printed product during all stages of the production processes, from the printing itself to sophisticated finishing – and as always, flexibility is the key!

## Large capacity tray A4, LU-409

Attaching the large capacity cassette LU-409 to a bizhub production printing system raises its paper capacity up to 7,500 sheets, along with the ability to process various types of media, with paper weights of between 40 and 300 gsm.



Two-sided  
printing/  
duplex



One-sided  
printing



Mixmedia  
white/  
colour  
sheets from  
different  
trays



Mixplex  
one-/two-  
sided  
during  
operation



Combined  
mixplex/  
mixmedia



## Large capacity tray SRA3, LU-410

When equipped with the large capacity cassette LU-410, a bizhub digital press has an upgraded paper capacity of up to 7,000 sheets and is capable of printing on various types of media up to and including SRA3 format (324 x 483 mm) and handles paper weights from 40 through to 300 gsm.



Two-sided  
printing/  
duplex



One-sided  
printing



Mixmedia  
white/colour  
sheets from  
different  
trays



Mixplex one-/  
two-sided  
during  
operation



Combined  
mixplex/  
mixmedia



## Paper feed unit PF-706

The large capacity paper feed unit PF-706 extends the paper capacity by adding three paper trays with capacities of up to 9,000 sheets and extends the media flexibility to between 40 and 350 gsm. Added flexibility comes from being able to feed all paper sizes from all trays.



Two-sided  
printing/  
duplex



One-sided  
printing



Mixmedia  
white/colour  
sheets from  
different  
trays



Mixplex one-/  
two-sided  
during  
operation



Combined  
mixplex/  
mixmedia



### ▀ Z-fold unit ZU-608

The Z-fold and punch unit has the mechanicals to Z-fold A3 sheets and reduce them to A4 format. By adding the appropriate options, Z-folded sheets can then be punched and/or inserted into leaflets, extending your production range accordingly.



Four-hole punching



Two-hole punching



Z-fold



### ▀ Multi (GBC) punching unit GP-501

The multi-punching unit delivers the kind of high performance multi-hole (GBC) punching capacity to process sheets at full system speed in the lead-up to offline spiral binding. The system choices include a variety of die sets corresponding to most popular punching schemes, including metal-based coil (velo) and plastic (comb) binding.



Multi punching



### ▀ Auto ring binder GP-502

The intelligent choice for customers who are looking for a unit to detect the right binding size and then bind sheets using a one-fits-all binding element. The GP-502 adds the ability to bind up to 102 sheets in one book, giving print providers the production technology to produce high value documents in a very short time.



Ring binding



### ▀ Stapling unit FS-532

Equipping a bizhub production printing system with the FS-532 stapling unit gives print providers a multi-position stapling system with the capabilities to produce manuals, reports and other extensive documentation with ease and dependability. This unit can staple up to 100 sheets at a speed able to match the production capacity, and cuts the one-fits-all staple to size while processing. Auto-shift sorting and grouping is also available; this unit gives an output capacity for up to 4,200 sheets. The FS-532 can be upgraded with optional punching and post-insertion.



Corner stapling



Two-point stapling



Two-hole punching



Four-hole punching



Colour cover insertion



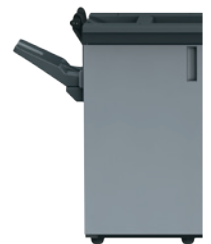
Colour sheet insertion



Auto-shift sorting



Variable staple length



### ▀ All-in-one finisher FS-532 & SD-510

The combination of the FS-532 with the SD-510 means the staple finisher is now able to make booklets. The fully automated booklet making capacity is for up to 20 sheets (80 pages) per booklet, has two folding functions, centre-fold and letter fold, with further options available, including punching and post insertion of printed sheets.



Corner stapling



Two-point stapling



Two-hole punching



Four-hole punching



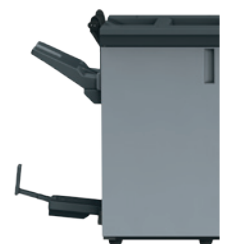
Booklet



Colour sheet insertion



Letter fold





# ALL-ROUND AVAILABILITY

Professional printers simply need dependable hardware and highly reliable printing technology. Which is why reliability was a top priority in the development of the bizhub production printing systems. Its quality of workmanship and robust metal construction guarantee absolutely sound and secure operation. Various tools and system features enhance the all-round usability further:

## ▀ Toner and paper refill on the fly

Toner and paper refill on the fly largely avoid production interruptions.

## ▀ Customer Maintenance Support

In addition, Konica Minolta's Customer Maintenance Support (CMS) concept permits the fast and simple exchange of certain system components and working parts by the operator.

Print providers welcome being able to solve such minor system problems instantly in-house as this further enhances their flexibility.

## ▀ CS Remote Care

Via CS Remote Care, Konica Minolta's remote service tool for counter readings, system errors and maintenance requirements of bizhub PRESS and PRO systems can be automatically transmitted to the Konica Minolta service.

This enables early analysis of the system status and preventive maintenance if required, before concrete problems occur. It also helps minimise system down-times and administrative efforts on user side, saving print providers time and money, helping them keep their sanity, and offering them the benefits of virtually all-round system availability and maximised productivity.



**CS Remote Care**

## Technical specifications

### PRINTER SPECIFICATIONS

<b>Print speed A4</b>	Up to 95 ppm
<b>Print speed A3</b>	Up to 55 ppm
<b>Print resolution</b>	1,200 x 1,200 dpi
<b>Gradations</b>	Up to 256 levels

### SYSTEM SPECIFICATIONS

<b>Paper weight</b>	Standard: 40–300 gsm; optional (with PF-706): 40–350 gsm; in duplex mode: 50–300 gsm
<b>Duplex unit</b>	Non-stacking type
<b>Paper sizes</b>	A5 to A3+ (SRA3); Standard: min.: 182 x 139 mm; max.: 324 x 463 mm; optional: min.: 95 x 139 mm*; max.: 324 x 483 mm**
<b>Maximum image area</b>	314 x 483 mm
<b>Maximum paper input capacity</b>	Max.: 9,000 sheets; main unit: up to 3,000 sheets; LU-409: up to 4,500 sheets; LU-410: up to 4,000 sheets; PF-706: up to 6,000 sheets
<b>Maximum paper output capacity</b>	Up to 4,200 sheets
<b>Warm-up time</b>	Less than 390 sec.
<b>Main unit dimensions (W x D x H)</b>	990 x 910 x 1,454 mm
<b>Main unit weight</b>	Approx. 372 kg

### CONTROLLER SPECIFICATIONS

<b>Hardware</b>	Embedded controller
<b>CPU</b>	Pentium G69050 2.8 GHz
<b>RAM</b>	2 GB
<b>HDD</b>	250 GB or above
<b>Page description languages</b>	PCL 5e/XL (PCL 6); Adobe PS 3; TIFF; PDF

### SCANNER SPECIFICATIONS

<b>Scan Speed A4</b>	Up to 95 opm
<b>Scan Speed A3</b>	Up to 55 opm
<b>Scan resolution</b>	1,200 dpi; 600 dpi; 400 dpi; 300 dpi; 200 dpi
<b>Scan modes</b>	TWAIN scan; Scan-to-HDD; Scan-to-FTP; Scan-to-SMB; Scan-to-email
<b>Scan formats</b>	PDF; TIFF; secured PDF; XPS

- All specifications refer to A4-size paper of 80 gsm quality.
- The support and availability of the listed specifications and functionalities varies depending on operating systems, applications and network protocols as well as network and system configurations.
- The stated life expectancy of each consumable is based on specific operating conditions such as page coverage for a particular page size (5% coverage of A4). The actual life of each consumable will vary depending on use and other printing variables including page coverage, page size, media type, continuous or intermittent printing, ambient temperature and humidity.
- Some of the product illustrations contain optional accessories.
- Specifications and accessories are based on the information available at the time of printing and are subject to change without notice.
- Konica Minolta does not warrant that any prices or specifications mentioned will be error-free.
- All brand and product names may be registered trademarks or trademarks of their respective holders and are hereby acknowledged.

### COPIER SPECIFICATIONS

<b>Copy speed A4</b>	Up to 95 cpm
<b>Copy speed A3</b>	Up to 55 cpm
<b>Copy resolution</b>	600 x 600 dpi
<b>Gradations</b>	256 gradations
<b>FCOT</b>	Less than 3.4 sec. (A4 LEF)
<b>Magnification</b>	25 – 400 % in 0.1 % steps
<b>Multiple copies</b>	1 – 9,999

### ACCESSORIES

<b>Automatic document feeder</b>	Max.: 100 sheets
<b>Large capacity tray</b>	<b>Large capacity paper feeding unit LU-409</b> Paper capacity: up to 4,500 sheets; paper weight: 40–300 gsm; standard paper sizes: A4; min. paper size: 250 x 176 mm; max. paper size: 314 x 229 mm
<b>Large capacity tray</b>	<b>Large capacity paper feeding unit LU-410</b> Paper capacity: up to 4,000 sheets; paper weight: 40–300 gsm; standard paper sizes: SRA3; min. paper size: 195 x 203 mm; max. paper size: 324 x 483 mm
<b>Paper feed unit</b>	<b>Paper feed unit PF-706</b> 3 magazines; paper capacity: up to 6,000 sheets; paper weight: 40 – 350 gsm; standard paper sizes: A5 to A3+ (SRA3); min. paper size: 95 x 139 mm; max. paper size: 324 x 463 mm
<b>Staple finisher</b>	<b>Stapling unit FS-532</b> Stapling of up to 100 sheets; 2-point and corner stapling; variable staple length (cutting mechanism); output for up to 4,200 sheets (A4); sub tray for up to 200 sheets; auto-shift sorting and grouping
<b>Booklet finisher</b>	<b>Saddle stitching kit SD-510 (for FS-532)</b> Booklet making of up to 20 sheets (80 images); saddle stitching; cover sheets from 50 to 300 gsm; output tray for booklets; multi-letter fold-in (up to 5 sheets); multi-half fold (up to 5 sheets)
<b>Z-fold and punch finisher</b>	<b>Z-fold unit ZU-608</b> 2 and 4 hole punching, Z-folding and half folding
<b>Punch kit</b>	<b>Punch kit PK-522 (for FS-532)</b> Punching (2 and 4 holes selectable)
<b>Post inserter</b>	<b>Post insertion unit PI-502 (for FS-532)</b> Insertion of preprinted sheets; PI trays for 200 sheets each
<b>Multi punching unit</b>	<b>Multi (GBC) punching unit GP-501</b> Multi punching of A4 sheets; user replaceable die sets for: velo bind, plastic comb, wire bind, colour coil, pro click; paper weight: 75 – 216 gsm
<b>Auto ring binder</b>	<b>Auto ring binder GP-502</b> Stacking, punching and binding of books, up to 102 sheets; self-adjusting bind elements (one size fits all); paper weight: content 75–120 gsm; cover 163–216 gsm

Your Konica Minolta Business Solutions Partner:

**Simitri HD**  
High Definition Polymerised Toner

**Simitri**  
with Biomass

